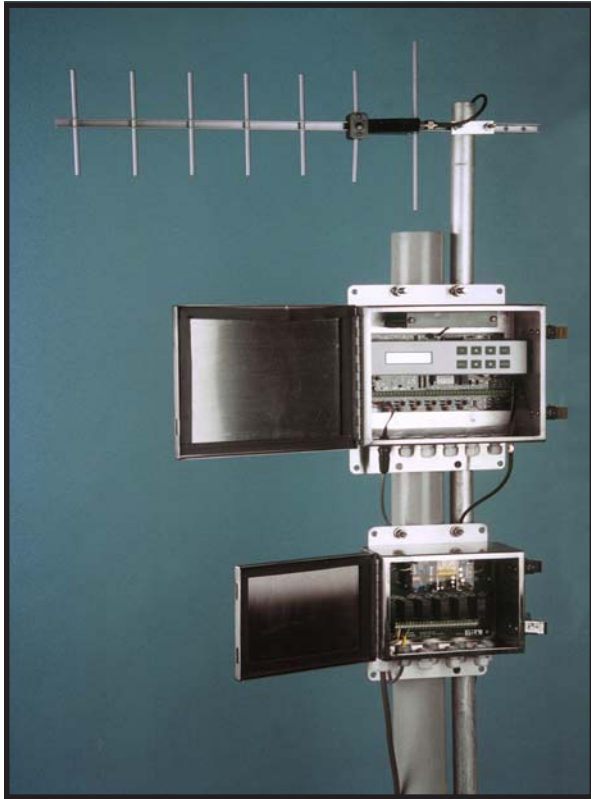


Cell-Alert™ 2000

WIRELESS INTERNET MONITOR



- Water and Air Quality
- Wells
- Lagoons, Streams and Levees
- Storm Water
- Remediation
- Weather
- Agriculture
- Municipal Utilities
- Irrigation
- Security

Cell-Alert 2000 with Optional ACR-201 Relay Interface

The STRISON Cell-Alert 2000 Remote Transmitting Unit is a comprehensive and robust wireless telemetry solution for the **most demanding monitoring applications**. The input flexibility of each channel, the integral display, and the control output functions offer unmatched capabilities for remote monitoring in a single unit.

The Cell-Alert 2000 transmits **digital** data in real time via the **existing North American cellular infrastructure** to the **STRISON Internet-based Operations Center**. The Center operates around the clock to receive data from field units for processing, analysis, reporting and alarm notification.

Alarm events are **immediately** transmitted to pagers, digital cellular phones or other devices as desired by the customer. The back-up battery ensures **power fail alarm** transmission under any power loss.

Data reports are transmitted at regular intervals as desired by the customer. Customers can access **summary and detail data for all sites** at any time through the secure STRISON web site, and have summary reports automatically e-mailed to them. Sophisticated measuring, timing and alarm algorithms programmed in the Cell-Alert 2000 make it the best solution to all your monitoring needs.

STRISON
WIRELESS SYSTEMS

STRISON WIRELESS SYSTEMS, LLC.

1302 N. O. HENRY BLVD. (U.S. 29 N.) • GREENSBORO, N.C. 27405 • U.S.A.
TEL: (336) 279-1070 • FAX: (336) 272-4521 • EMAIL: wireless@strison.com
<http://www.strison.com>

Cell-Alert™ 2000

WIRELESS INTERNET TELEMETRY

GENERAL INFORMATION

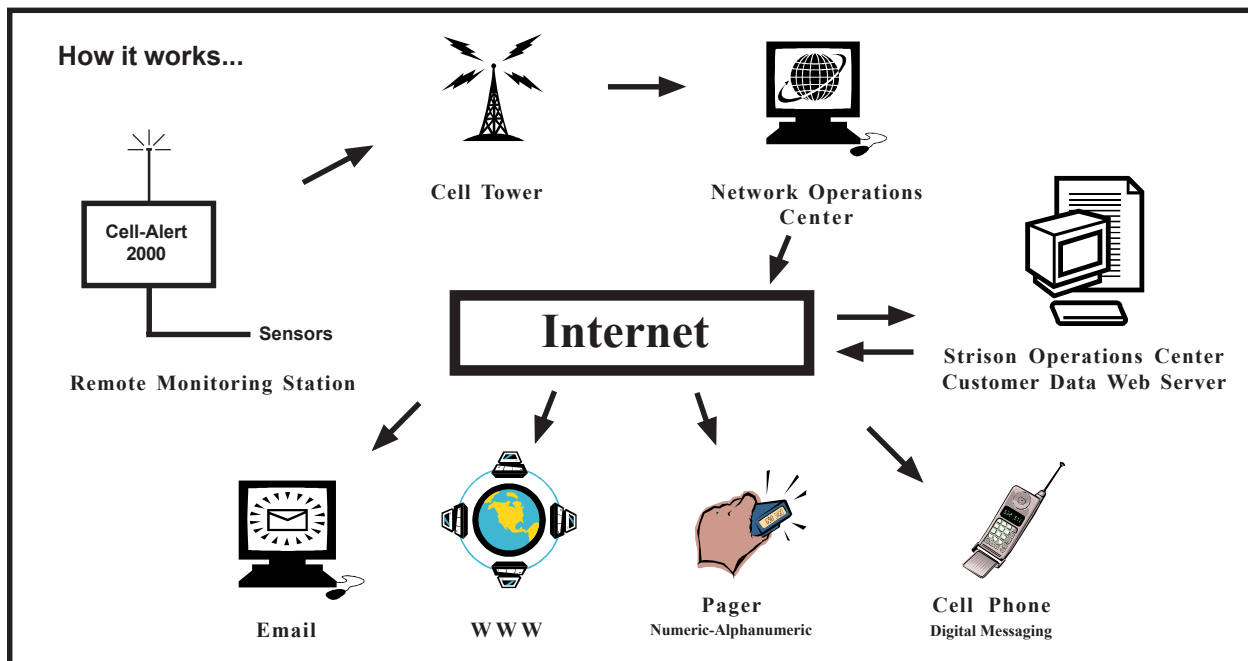
The Cell-Alert 2000 Remote Transmitting Unit provides comprehensive monitoring solutions for the **most demanding applications**. The integral **LCD display with keyboard** provides convenient access to current values and parameters for installation and maintenance operations. The optional **serial expansion bus** allows the addition of multiple input and output cards, making it adaptable to virtually all remote monitoring applications. A variety of optional accessories are available to facilitate installation in **both new and retrofit applications**.

The Cell-Alert 2000 is designed for installation in the harshest environmental conditions. **Years of field experience** show the Cell-Alert 2000 performs reliably through adverse weather including **hurricanes, ice storms, severe electrical storms and conditions of high temperature and humidity**. Extensive design and packaging precautions make the Cell-Alert 2000 **immune to RFI** (radio frequency interference) **and EMI** (electromagnetic interference).

The inherent input flexibility of each channel of the Cell-Alert 2000 system ensures that **all critical functions** can be monitored in virtually any application. The unit is easily configured to accept a wide variety of sensor inputs to monitor turbidity, chlorine, pressures, temperatures, humidity, weather data, currents, levels and flows.

SPECIFICATIONS

Power Requirements	12 VDC (±10%) @ 1.5 A
Power Consumption	18 Watts (Transmitting) 1.8 Watts (Stand-by Mode) 36 microWatts (Sleep mode)
Power Sources	Power Supply Type PS-201, PS-202 or AC Relay Interface Type ACR-201 (85-265 VAC, 50- 60 Hz); solar power
Mechanical	4.25" (108mm) Deep 11.125" (282.5mm) Wide 11.125" (282.5mm) High 9.0lbs. (4.08 kg)
Environmental	-30°C to 60°C Operating -50°C to 110°C Storage 5% to 95% RH non-cond. IP65 (NEMA 4X) SS enclosure
Inputs	6 analog/digital inputs 0-5, 0- 15, 0-55 VDC and 4-20mADC jumper selectable ranges, 2 digital/pulse inputs
Output	1 or 2 Form C contacts, 0.3 A @ 125 VAC, 1 A @ 30 VDC



STRISON
WIRELESS SYSTEMS

STRISON WIRELESS SYSTEMS, LLC.
1302 N. O. HENRY BLVD. (U.S. 29 N.) • GREENSBORO, N.C. 27405 • U.S.A.
TEL: (336) 279-1070 • FAX: (336) 272-4521 • EMAIL: wireless@strison.com
<http://www.strison.com>